



A U S T R A L I A

AEM Australia Pty. Ltd.
ABN 76 003 136 383

Quality
Endorsed
Company
ISO 9001:1994
Lic. No. 0807
Standards Australia

M.V. Disconnecter Type "VR" with Earth Switch



Disconnecter

Rated Voltage: 12/24kV & 36kV
Rated Current: 800A
BIL Rating: 150kVp & 200kVp
Current Withstand: 25kA

Earth Switch

Current Withstand: 25kA

M.V. Disconnecter Type "VR" with Earth Switch

General Description

The AEM Type "VR3" Disconnecter is a 3 phase Vertical Break Disconnecter with Earth Switch combination designed for MV Outdoor Distribution Systems to comply with AS 1306-1985 and IEC 129

Features

- Disconnecter and Earth Switch Handles Interlocked.
- Current carrying parts are manufactured from HD. HC. Copper.
- Silver Plated contacts for high performance, low maintenance and long operational life.
- Terminal Palms are bright tin plated.
- Hinge End Contact Blade so that current path is not through pivot joint.
- Flicker Arcing Horns
- Adjustable phase centres.

Options

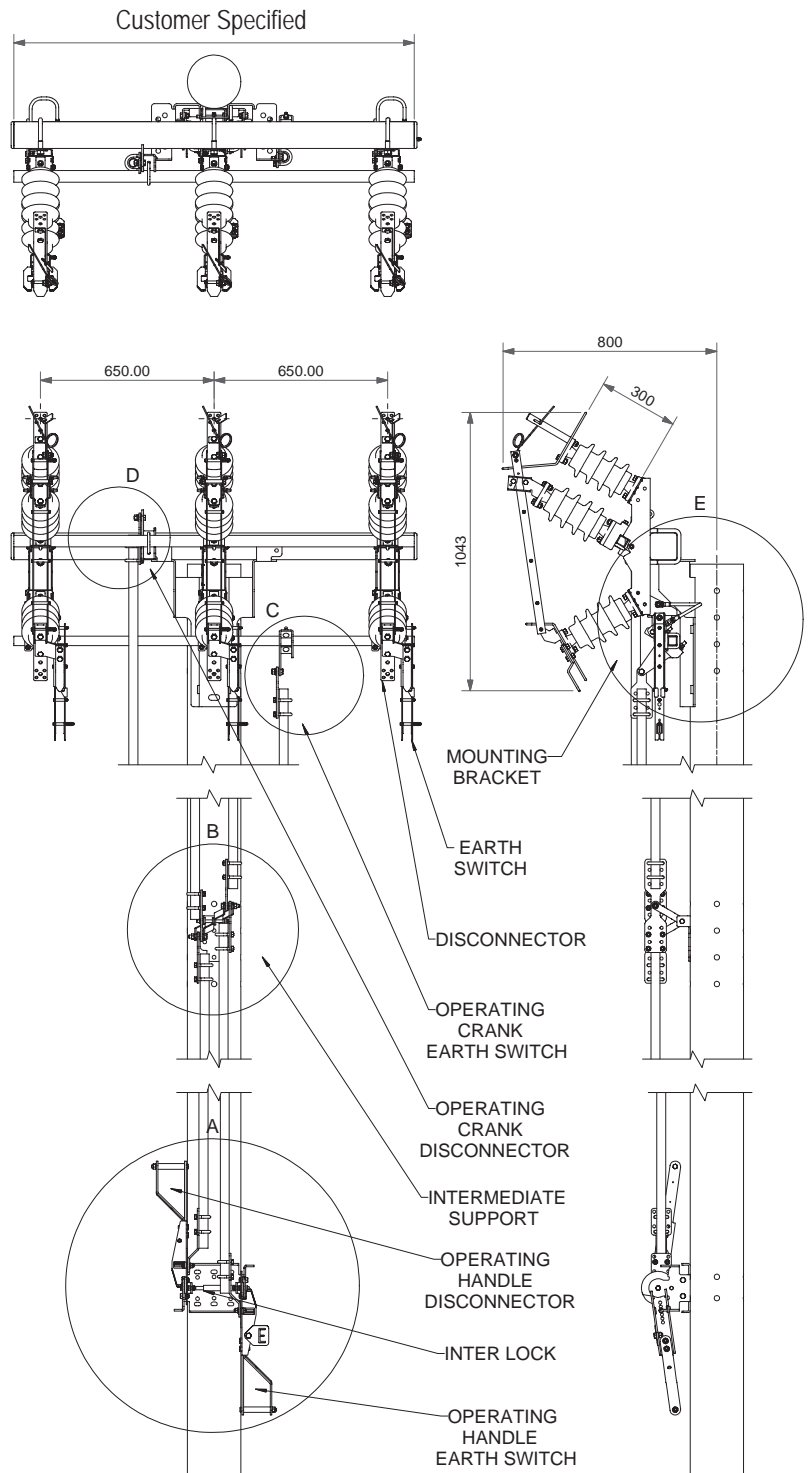
- Load Break Interrupters.
- Insulators: Porcelain, Polymeric or Cyclo-aliphatic.
- Poles: Timber, Metal, Concrete.
- Crossarms: Aluminium, Steel, Insulated.

Operation

- Up Down Handle.
- Operating Stick.

Reference Catalogue

M.V. Vertical Break Disconnecter
Type "VR" Cat No. AEM 118.1



CAT. No. AEM 130.1



AEM Australia Pty. Ltd.
ABN 76 003 136 383

27 Walker Street SOUTH WINDSOR NSW 2756 - AUSTRALIA. Phone: +61-2-4577 2866 Fax: +61-2-4577 3711 www.aemaust.com.au
email: sales@aemaust.com.au

AEM Australia Pty Ltd is working continually to improve their products, therefore this company reserves the right to change or amend the information contained in this leaflet without notice.