

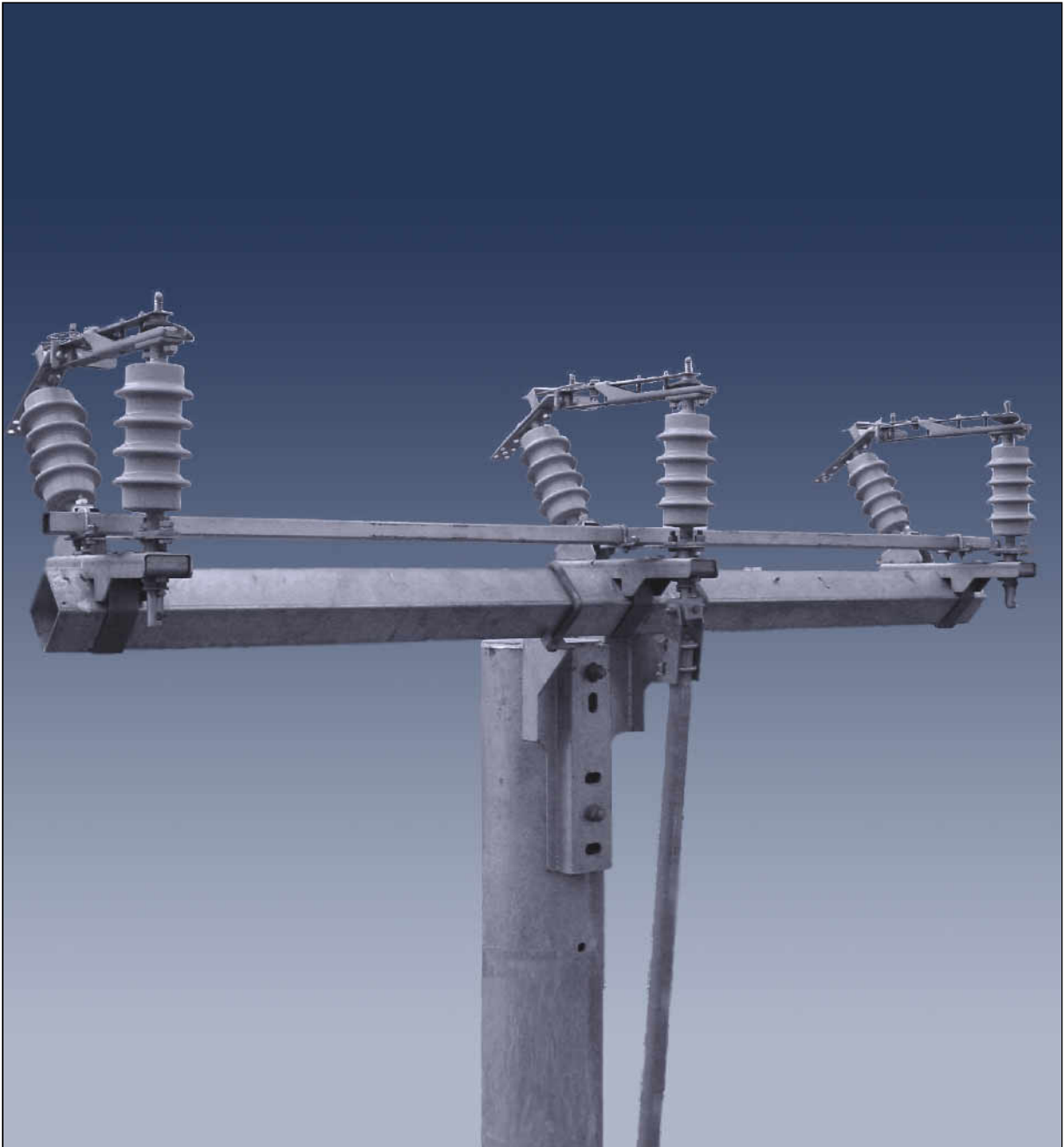


A U S T R A L I A

AEM Australia Pty. Ltd.  
ABN 76 003 136 383

Quality  
Endorsed  
Company  
ISO 9001: 2000  
Lic. No. 0807  
Standards Australia

## ***M.V. Side Break Disconnecter Type "SB"***



<i>Rated Voltage:</i>	<i>12/24kV to 36kV</i>
<i>Rated Current:</i>	<i>800A &amp; 1000A</i>
<i>BIL Rating:</i>	<i>150kVp &amp; 200kVp</i>
<i>Short Time Current Withstand:</i>	<i>25/1sec</i>

# M.V. Side Break Disconnecter Type "SB"

## General Description

The AEM Type "SB" is a 3 phase Side Break Disconnecter designed for MV Outdoor Distribution Systems to comply with AS1306-1985 and IEC 129.

## Features

- Current carrying parts are manufactured from HD. HC. Copper.
- Silver Plated contacts for high performance, low maintenance and long operational life.
- Terminal Palms are bright tin plated for use with copper and aluminium connectors.
- Adjustable phase centres.
- Flicker Arcing Horns.

## Options

- Light Weight Version.
- Coastal Version.
- Pre-assembled or Modular Delivery.
- Mounting: Pole Top, Mid Pole and Vertical.
- Load Break Interrupters.
- Insulators: Porcelain, Polymeric.
- Pole Type: Timber, Metal, Concrete.
- Crossarms & Interphase Shaft: Aluminium, Steel, and Insulated.
- Down Rod with Insulation Section.

## Operation

- Rotary handle.
- Up Down Handle.
- Operating Stick.

